

Welcome!

Welcome to the Joust Site Builder!

JSB lets you create your sites quick and easy, as it supports drag&drop technology.

You can create your site plan as easy as to drop the HTML pages and even the HTML links (anchors) from any of your page into the TreeMenu.

You can import your already existing Joust-based projects in order to continue support them quick and easy.

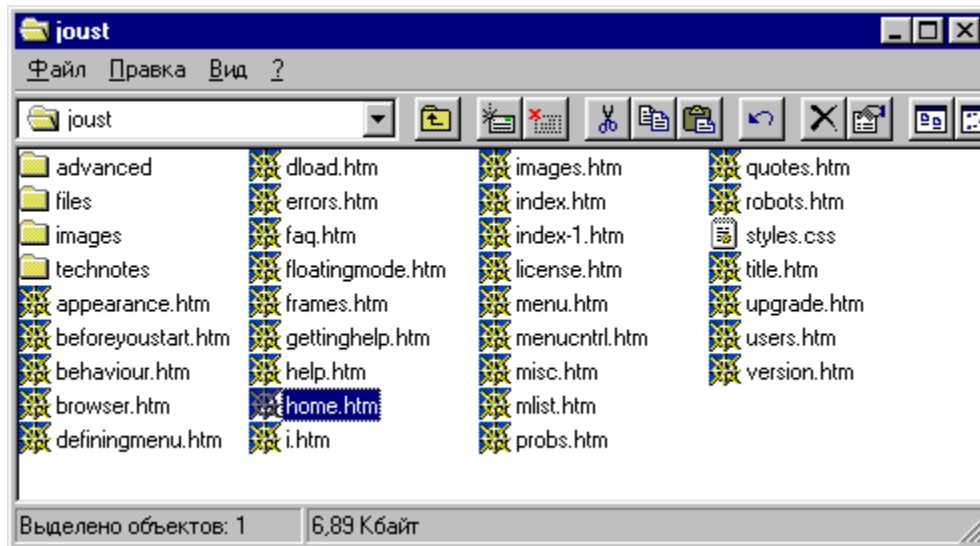
You can save your site project in internal JSB format in order to open it quick next time.

You can export your JSB project into Joust INDEX.HTM file. All your pages will be adjusted in order to maintain Joust navigation. So you don't need have any care about manual JavaScript programming. Though, your must insert any scripts you wish just after the project is exported.

New project quick start

You can get quick start as easy as to drop your site homepage into the JSB.
You need to open File Manaher and choose HTML file.

For example:



Then you can drag&drop the homepage file into JSB.


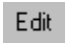

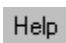
You can drop this file either in the Page Browser frame or in Site Plan frame with the same result.

You'll got the TreeMenu (Site Plan) item created and homepage loaded into the Page Browser.

Interface parts

Main program window has the next main elements:

Main menu - contains next topics:

	File -	JSB project file operations
	Edit -	HTML editor operations
	Options -	micelaneous options
	Help -	Help (this file) call

Toolbar - contains speedbuttons for all main actions

	New -	new JSB project creation
	Open -	open JSB project
	Save As -	save JSB project
	Import From -	import from Joust index
	Export To -	export to Joust index
	Open Site -	open your site in web browser

Site Plan frame - contains tree-shaped site structure

Insert item

